

Строй  контръ-до

ФАНТАЗИЯ

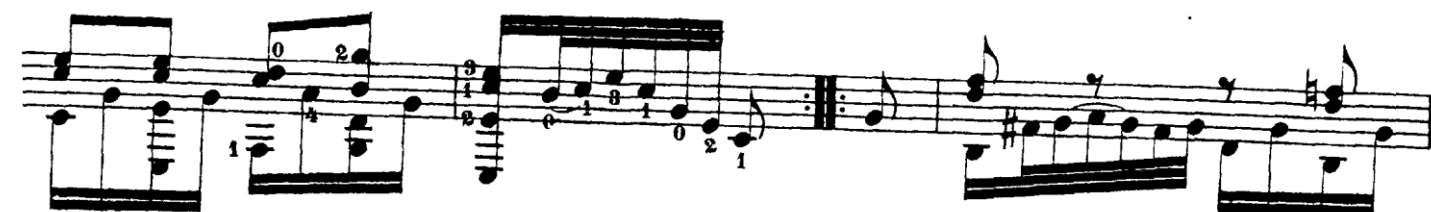
Для гитары.

Муз. Ф. СОРА.

Арт. А. О. СИХРА.

Andante.





Минорная

ар.3.

plento

Мажорная.

Вар.4.

Вар. 5.

4

First musical staff with treble clef, showing a sequence of chords and melodic lines.

Second musical staff, labeled "Bap.6." above the staff. It includes a double bar line and a key signature change to one sharp (F#).

Third musical staff, continuing the piece with various rhythmic patterns and chord progressions.

Fourth musical staff, featuring a key signature change to two sharps (F# and C#).

Fifth musical staff, continuing the melodic and harmonic development.

Sixth musical staff, showing further progression of the piece.

Seventh musical staff, labeled "Bap.7." at the beginning. It includes a key signature change to two sharps (F# and C#) and a time signature change to 2/4.

A musical staff in treble clef with a key signature of one sharp (F#). It contains several measures of music, including chords and single notes. A marking '12' is present below the staff.

A musical staff in treble clef with a key signature of one sharp (F#). It contains several measures of music. A marking 'Son garm.' is written above the staff. There are also markings '12' and '12' below the staff.

A musical staff in treble clef with a key signature of one sharp (F#). It contains several measures of music, including chords and single notes, ending with a repeat sign.

A musical staff in treble clef with a key signature of one sharp (F#) and a 2/4 time signature. It is labeled 'Coda.' and contains several measures of music. There are markings '1/8' and '1/8' below the staff.

A musical staff in treble clef with a key signature of one sharp (F#). It contains several measures of music, including chords and single notes, ending with a repeat sign.

A musical staff in treble clef with a key signature of one sharp (F#). It contains several measures of music, including chords and single notes, ending with a repeat sign.

A musical staff in treble clef with a key signature of one sharp (F#). It contains several measures of music, including chords and single notes, ending with a repeat sign.

First musical staff with treble clef, showing a sequence of chords and melodic lines. Fingering numbers 1, 2, 3, 4 are visible above notes.

Second musical staff with treble clef, continuing the sequence of chords and melodic lines. Fingering numbers 1, 2, 3, 4 are visible.

Third musical staff with treble clef, including a fermata over a note. Fingering numbers 5, 4, 3, 2, 1, 0 are visible. Rehearsal marks 12 and 12 are present.

Fourth musical staff with treble clef, starting with a forte *f* dynamic and the instruction *Ped.* (pedal). Fingering number 5 is visible.

Fifth musical staff with treble clef, showing a sequence of chords and melodic lines.

Sixth musical staff with treble clef, including a forte *f* dynamic and a piano *p* dynamic. Fingering numbers 4, 1, 2 are visible.

Seventh musical staff with treble clef, starting with the tempo instruction *Allegro.*

First musical staff with treble clef, showing a sequence of chords and melodic lines.

Second musical staff with treble clef, featuring a complex melodic line with numerous fingerings (0, 1, 2, 3, 4) and slurs.

Third musical staff with treble clef, starting with a *dolce* marking and containing a melodic line with slurs.

Fourth musical staff with treble clef, showing a melodic line with slurs and fingerings (i, 1, 2, 3, 4).

Fifth musical staff with treble clef, featuring a melodic line with slurs and fingerings (2, 4, 1, 2, 3, 4), ending with a *p* marking.

Sixth musical staff with treble clef, showing a melodic line with slurs and fingerings (7).

Seventh musical staff with treble clef, featuring a melodic line with slurs and fingerings (12, 13, 4, 3).